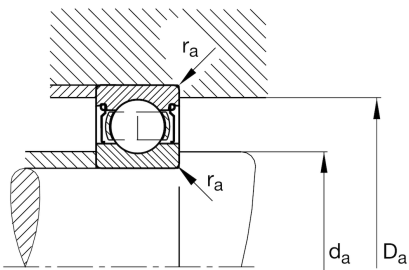
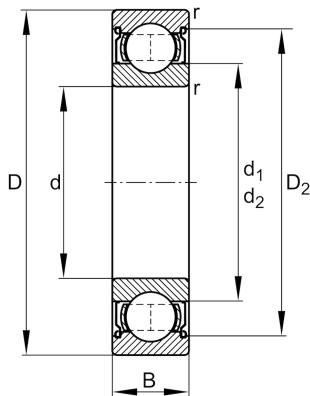
**FAG****6207-2Z**

Deep groove ball bearing

Schaeffler ID:  
0167202530000Deep groove ball bearing 62...-2Z, single  
row, shields, steel sheet metal cage

## Technical information

**Dimensions**

$r_{\min}$	1.1 mm	Minimum chamfer dimension
$D_2$	63.3 mm	Caliber diameter outer ring
$d_1$	47.2 mm	Shoulder diameter inner ring
	0.284 kg	Weight

**Main Dimensions & Performance Data**

d	35 mm	Bore diameter
D	72 mm	Outside diameter
B	17 mm	Width
$C_r$	27,500 N	Basic dynamic load rating, radial
$C_{0r}$	15,300 N	Basic static load rating, radial
$C_{ur}$	950 N	Fatigue load limit, radial
$n_G$	11,700 1/min	Limiting speed
$n_{gr}$	10,400 1/min	Reference speed

**Mounting dimensions**

$d_{a \min}$	42 mm	Minimum diameter shaft shoulder
$D_{a \max}$	65 mm	Maximum diameter of housing shoulder
$r_{a \max}$	1.1 mm	Maximum fillet radius

**Calculation factors**

$f_0$	13.8	Calculation factor
-------	------	--------------------

**Temperature range**

$T_{\min}$	-20 °C	Operating temperature min.
$T_{\max}$	120 °C	Operating temperature max.